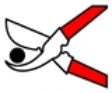




FELCO 801 - Power-assisted

Electric tool - Fast-cutting and light model

Made in Switzerland by FELCO



30mm/1.2 in. 255mm/10in. 745g/26.3oz.



These light, easy to handle and fast cutting pruning shears are recommended for all intensive pruning work. The new tool geometry guarantees easy access to branches that require cutting. The cutting head ensures a clean and precise cut with diameters of up to 30 mm.

Controlled and powered by its Powerpack the FELCO 880, the FELCO 801 set has been developed as a result of carefully studied ergonomics, providing relief to arm and shoulder muscles, throughout the entire day spent pruning.

The tool body allows you to change and use a variety of head types (800F, 800M).



RECOMMENDED FOR

Our recommendation (★ = Recommended, ★★ = Strongly recommended, ★★★ = Best fit)

Viticulture	★★★
Arboriculture	★★★
Parks and Gardens	★★★
Nursery	★★★
Local authorities	★★★
Forestry	★★★
Small hand	★★★
Average-sized hand	★★★
Large hand	★★★
Left-handed	★★★

THE POINTS OF EXCELLENCE



Cutting head "1-30 mm"

Straight cutting head (viticulture), for accurate cutting.



Interchangeable cutting head

The tool body allows you to change the head type with a choice of many including the slender cutting head 800F, ideal for cutting diameters of up to 20 mm.



Semi-open blade

The semi-open mode speeds up the cutting of small diameters.



Stand-by Mode

The stand-by mode may be activated when moving, ensuring heightened safety.



Non-progressive blade lock

Deactivation of the progressive blade lock mode enables reversion to pneumatic cutting style.



Micrometric adjustment

FELCO's micrometric adjustment system guarantees an optimal adjustment of the cutting head throughout the life of the tool. It ensures a clean and precise cut.



Grease bolt

The grease bolt enables easy and efficient lubrication of the cutting head without having to dismantle the tool.



Compact design

The compact design of the pruning shears and the specific geometry of the cutting head enable easy access to the branches which require cutting.



Optimal handling

The perfect diameter of the tool body, the synthetic, non-slip streamline shape and the pivot trigger ensure optimal handling.



Forged aluminum body

Lightweight, strong and sturdy thanks to special aluminum alloys and advanced precision forging methods perfectly mastered by FELCO.



Li-Po Battery

Dependent on requirements, one or two batteries can be used at the same time or sequentially. The ultra-light and slim battery is completely independent from the control housing.

ACCESSORIES



FELCO 902
 Sharpening tool
 Sharpening stone



FELCO 903
 Sharpening tool
 Sharpener



FELCO 980
 Maintenance product
 Spray



FELCO 990
 Maintenance product
 Grease



800F

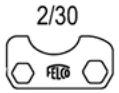
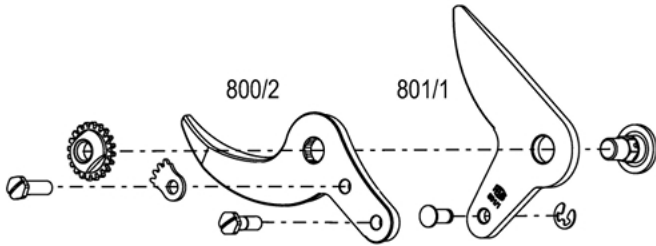
Slender cutting head







800M

Cutting head for hooves

SPARE PARTS



FELCO	REF.	Designation	Composition	UCC Barcode
	801/1	Blade	1x 801/1	 7 83929 40377 9
	800/2	Anvil-blade	1x 800/2	 7 83929 40074 7
	-	Additional parts: available from approved retailers who guarantee a direct after sales service. You will find your nearest specialist on our website.		

MAINTENANCE



Preparation

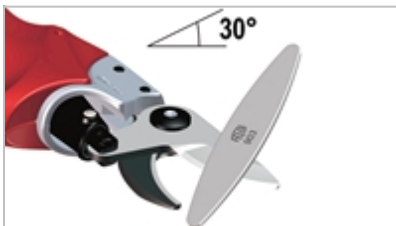
Before using, we recommend that you check the charge status of your tool and re-adjust the portage where necessary.



Cleaning

It is advisable to clean your tool after each use.

If your tool is particularly dirty or subject to rusting after exposure to moisture, do not delay cleaning.



Sharpening

It is advisable to sharpen your tool at least once a day, but if you feel that your tool is not cutting as well as usual, sharpen it right away!



Adjustment

Regulate the working of the blade and anvil-blade by adjusting the tightening of the nut. The blade should rub against the anvil-blade over 2/3 of its length.

PARTS REPLACEMENT



Changing the blade

When the blade and the anvil-blade no longer cross, or when the blade is badly damaged, it is advisable to change it.



Changing the anvil-blade

When the blade and anvil-blade no longer cross and the anvil-blade is badly damaged, it is advisable to change it.